



OPENVIEW LUMINOUS VIRTUAL WINDOWS™ - BUYER'S GUIDE

Introducing OpenView, a new generation of panoramic Luminous Virtual Windows no longer limited in size. OpenView utilizes ultra high-resolution landscape photography which allows the imagery to emulate the same depth of field that the human eye perceives.

Sky Factory OpenView image panels are available in 1 foot increments (from 2'x4' to 5'x8') and can be ordered to custom dimensions. Choose from a variety of wood types as well as aluminum trim to complement your space. Create a custom view to nature with OpenView that seamlessly integrates into any interior environment.

SKY FACTORY™

Shown in brushed aluminum trim.



CONTACT OUR DESIGN TEAM

At any point during the specification process, please feel free to reach out to our design team (Sky Designers) for more information or to answer any questions you may have. In-office hours are Monday through Friday, 8am - 5pm, Central Time.



AARON BIRLSON

aaronb@skyfactory.com



JEFF JOHNSON

jeffj@skyfactory.com



KEVIN WELLS

kevinw@skyfactory.com

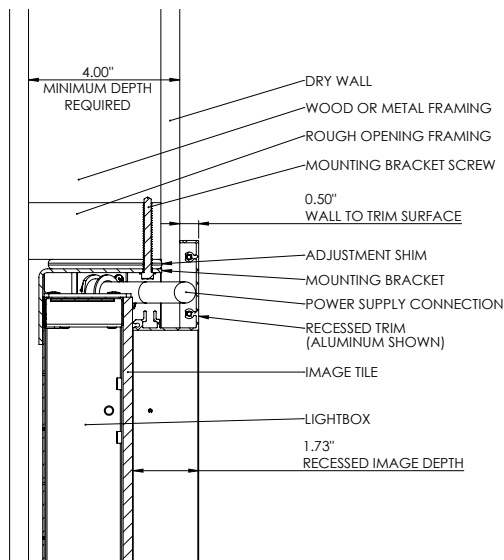
PHONE: +1 (641) 472-1747 **EMAIL:** info@skyfactory.com

6 STEP SELECTION SYSTEM

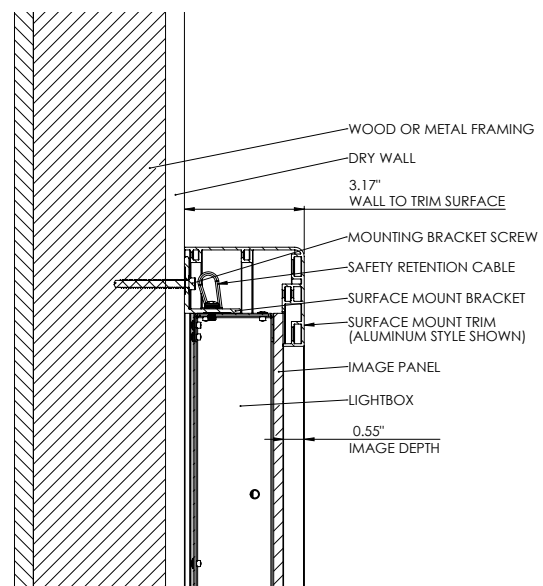
- Step 1** Choose Mounting Type
- Step 2** Determine Wall Size
- Step 3** Choose Configuration and Sizes
- Step 4** Choose Image
- Step 5** Choose Trim Material and Finish
- Step 6** Contact our Design Team

STEP 1 CHOOSE YOUR MOUNTING TYPE

OpenView Luminous Virtual Windows come in two mounting styles: Recessed and Surface Mount. Recessed mounting requires 4" of depth from the outside face of the wall covering. Surface mounting comes with side panels which mount to the case.



RECESSED MOUNT APPLICATION

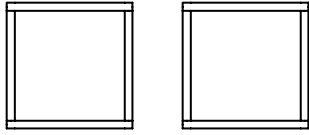


SURFACE MOUNT APPLICATION

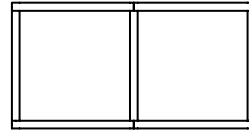
STEP 1 CHOOSE YOUR MOUNTING TYPE



Please note that joined panels are available in recessed mount applications only. Split panels can be either surface mount *or* recessed mount.



Surface or Recessed Mount



Recessed Mount Only

STEP 2 DETERMINE WALL SIZE

Determining your wall size and ceiling height will allow you to plan the configuration of panels that will best fit your space and budget.



A note about wall height: In order to create the most realistic virtual window illusion, our graphic artists will need to know the distance from the floor to determine the ideal horizon line placement and proper perspective.





OpenView shown in powder-coated white aluminum trim.

EARTH & SKY CONFIGURATIONS

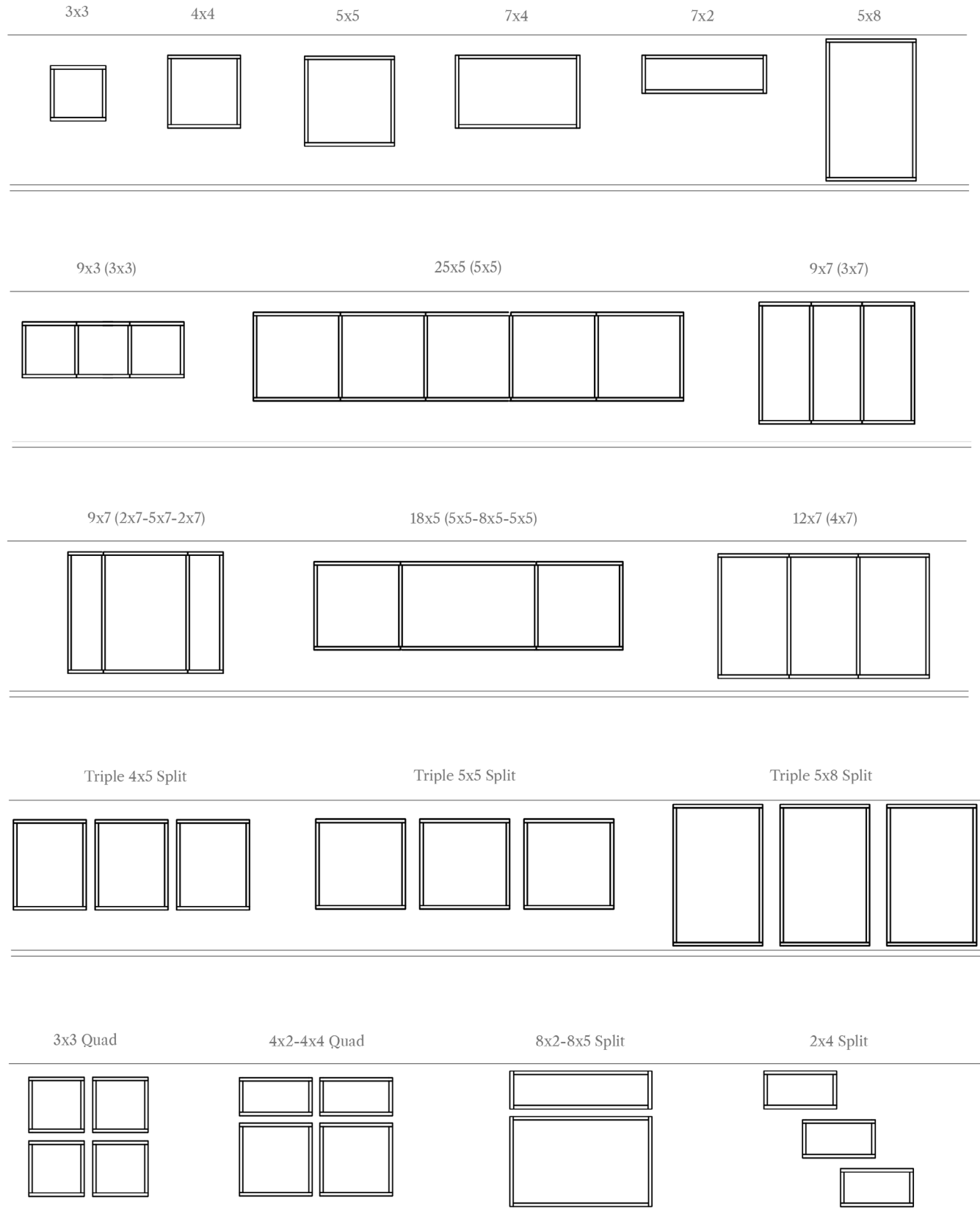
Sky Factory offers scenic points-of-view of expansive landscapes, seascapes, and corresponding skyscapes. Our team of visual artists ensure color consistency within each Earth & Sky scene, offering beautiful vistas for the walls and ceiling in your project.

For more information about Earth & Sky, please contact us:
info@skyfactory.com

STEP 3 CHOOSE CONFIGURATION AND SIZES

OpenView Image Panels are modular, ranging from 2'x4' to 5'x8'.

See below for some size and configuration examples. Please note that joined panels are available in recessed mount applications only.





15'x3' OpenView Luminous Virtual Window panorama in hard maple trim.

STEP 4 CHOOSE YOUR IMAGES

[Explore More Images](#)

Browse our online image library for hundreds of artist-captured, ultra high resolution landscape images: <https://skyfactory.com/image-library/wall>
All images can be customized by our graphic artists to fit a wide variety of sizes and configurations. Sky Factory imagery is proprietary - we never use stock photography or AI generated images. See below for some example images.



7acj



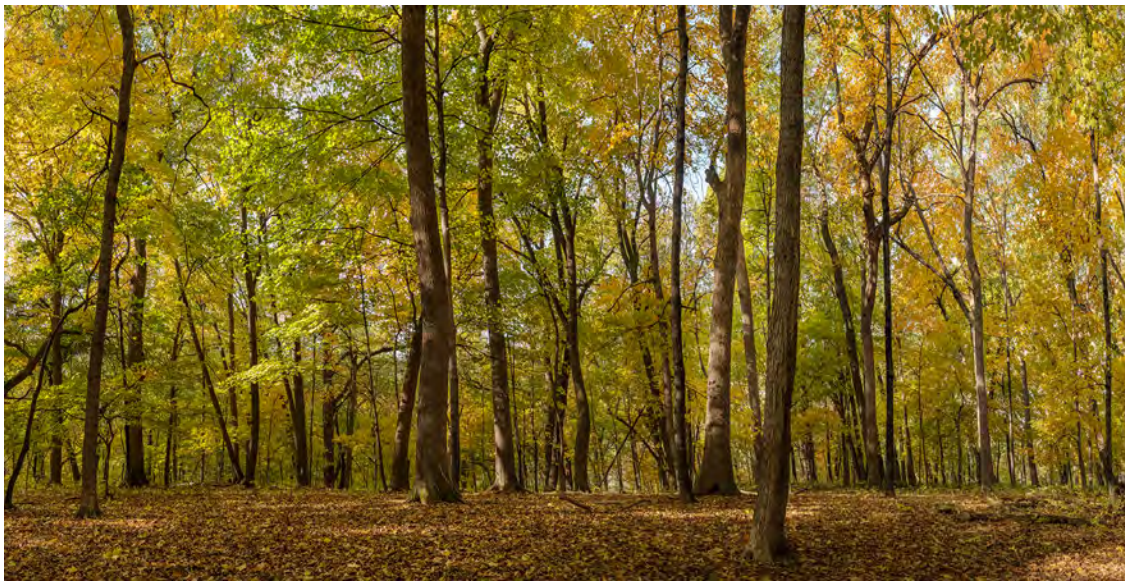
7abu



7acb



7aca



7abp



7abt

[Explore More Images](#)

STEP 4 CHOOSE YOUR IMAGES

Once you have chosen an image or images, our graphic artists will create a mockup or “sketch” that illustrates how your preferred image will look in each OpenView configuration. Our team takes great care to compose the image so as to create the most realistic window illusion possible.



Example Image: 7acc

Shown in brushed aluminum trim



4x5



7x5



9x7 (3x7 panels)



9x7 (2x7-5x7-2x7 panels)



18x5 (5x5-8x5-5x5 panels)

IMAGE ID

Please see below for a sample image selection that illustrates how to find your Openview Image ID. If you have any questions, please contact us: +1 (641) 472-1747 or info@skyfactory.com

Example Image: 7acc



Size and Configuration: 9'x7' (2x7-5x7-2x7 panels)



Trim Material: Brushed Aluminum

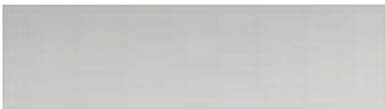


Image ID_OV_Overall Width x Height_Panels Width_Trim Material

Image ID
OpenView (Product)
Overall width x height
Panels width
(Left to Right)
Trim (Aluminum)

7acc_OV9x7_2-5-2_AL



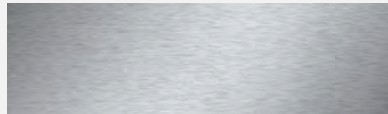
7acc_OV9x7_2-5-2_AL

STEP 5 CHOOSE TRIM MATERIAL AND FINISH

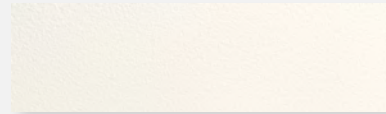
- Wood trim is finished with a clear, catalyzed wax finish.
- Primed paint-grade wood can take water-based and oil-based top coats.
- Aluminum is provided with a clear anodized finish, or a powder-coated white finish.

Custom trim materials are available upon request.

ALUMINUM TRIM IS AVAILABLE IN THESE FINISHES:

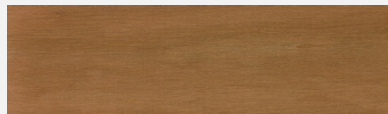


BRUSHED & ANODIZED



POWDER-COATED WHITE

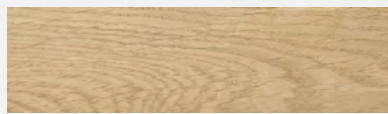
SOLID WOOD TRIM IS AVAILABLE IN THESE FINISHES:



CHERRY



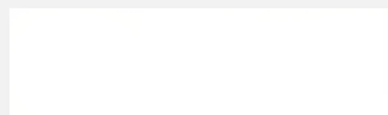
MAPLE



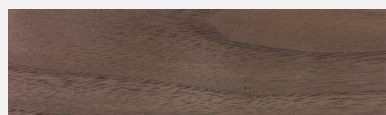
WHITE OAK



RED OAK



PRIMED PAINT-GRADE WOOD



WALNUT



OpenView shown in powder-coated white aluminum trim.

OpenView shown in walnut trim.



STEP 6 REACH OUT TO OUR DESIGN TEAM

With almost 60 years of combined experience, Sky Factory's designers work with you to bring your project to completion and transform your space. Design consulting services are complimentary. We collaborate with architects, interior designers, facility managers, and builders to exceed your expectations.



AARON BIRLSON

aaronb@skyfactory.com



JEFF JOHNSON

jeffj@skyfactory.com



KEVIN WELLS

kevinw@skyfactory.com

"I really like helping customers come up with creative ways to utilize our products in their projects, and then hearing how much everyone enjoys the feeling they create once they're installed." - Kevin Wells, Sky Designer

PHONE: +1 (641) 472-1747

EMAIL: info@skyfactory.com

SKYFACTORY.COM

SKY FACTORYTM



SKY FACTORYTM

[SKYFACTORY.COM](https://skyfactory.com)